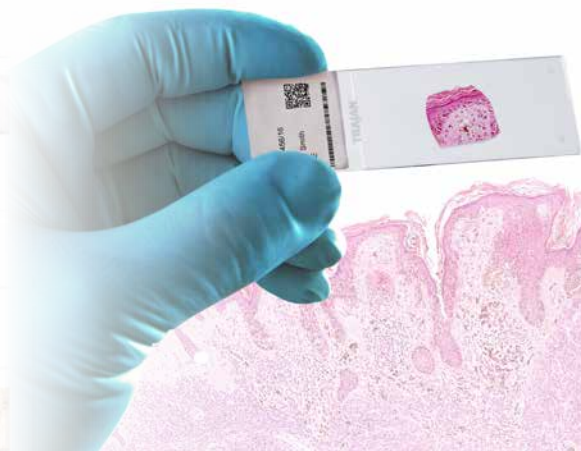




Introducing ScyTek Laboratories

Delivering high quality IHC solutions

Q: Do you have trouble finding a broad range of high performance antibodies to optimise your results?



A: ScyTek offers an extensive range of quality antibodies for both clinical and research applications.

ScyTek Laboratories has been manufacturing exceptional quality IHC reagents for 30 years.

With ISO 13485 accreditation, customised solutions and superior technical support, the ScyTek range includes primary antibodies, stains and special stains, and ELISA components for both clinical and research applications.

Trajan is proud to be partnering with ScyTek to deliver quality IHC solutions to the Australian market. With over 1,000 products available, ScyTek has something for every laboratory.

Showing the right path

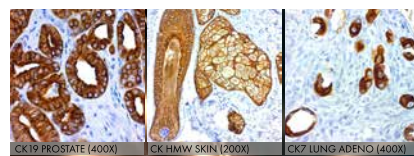
Contact us on 1800 257 213 for advice on workflow solutions specific to you.

www.trajanscimed.com

Antibodies for Immunohistochemistry

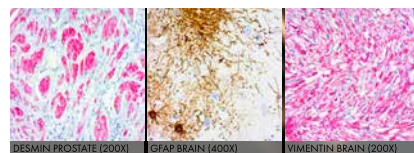
Cytokeratins (CK, keratins)

Cytokeratins are intermediate filament keratin-containing proteins that can be found in epithelial tissue. Cytokeratins are further categorised into type I (acidic) and type II (basic or neutral) in addition to subdivisions based on molecular weight. ScyTek offers a wide variety of both specific and broad spectrum antibodies.



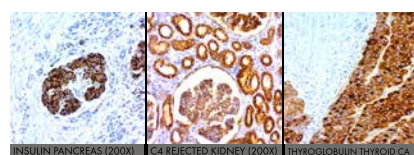
Intermediate filaments (type III)

Type III intermediate filaments are proteins that include desmin, vimentin and GFAP. ScyTek offers multiple clones to specifically label and differentiate these proteins.



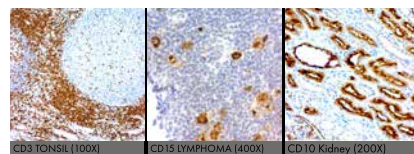
Autoimmune markers

Autoimmune disease affects an increasing number of people throughout the world. These diseases generally arise from the cell-mediated attacks against one of more constituents of the body's own tissue. ScyTek offers an expanding list of antibodies targeted at this diverse group of disorders.



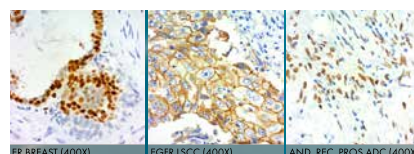
Immune regulation (CD markers)

CD markers are well established in the scientific literature for their importance in a wide array of immune response systems. ScyTek continues to expand this family of products as relevant new markers are developed.



Receptors

Numerous receptor sites are important for initiation of signalling pathways that lead to changes in the behaviour of the target cells. High quality, well characterised markers for receptors have become increasingly important in a variety of disease states.



Tumour markers

In recent years, tumour markers have become more useful as leading-edge research has identified numerous markers with ever increasing specificity for individual tumour types.



Research antibodies

This category includes many new antibodies that are focused primarily on basic research. In an effort to provide research scientists with new and unique tools, ScyTek constantly monitors current research publications to find valuable new markers.

